

**ICG** **INDOFINE Chemical Company, Inc.**

121 Stryker Lane, Bldg. 30, Suite 1 • Hillsborough, NJ 08844 • U.S.A.

Phone: (908) 359-6778 • FAX: (908) 359-1179

website: [www.indofinechemical.com](http://www.indofinechemical.com)

e-mail: [chemical@indofinechemical.com](mailto:chemical@indofinechemical.com)

**CERTIFICATE OF ANALYSIS**

Catalog Number: 06-2192

Product Name: **CARPAINÉ**

CAS Number: [3463-92-1]

Lot Number: 2401900

Chemical Formula: C<sub>28</sub>H<sub>50</sub>N<sub>2</sub>O<sub>4</sub>

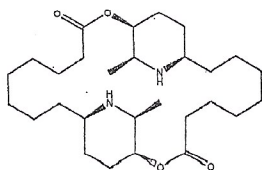
Molecular Weight: 478.72

Appearance: Off-white powder

Water content: 0.8%

Storage: Store in a cool, dry place. Protect from light.

Purity(HPLC): 99.5%



Prepared by:  
*Ramesh Mandadi*  
Ramesh Mandadi  
Director of Operations

Reviewed and Approved by:  
*Sujata Moton*  
Sujata Moton  
VP



# INDOFINE Chemical Company, Inc.

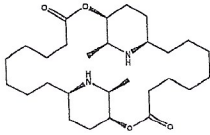
121 Stryker Lane, Bldg. 30, Suite 1 • Hillsborough, NJ 08844 • U.S.A.

Phone: (908) 359-6778 • FAX: (908) 359-1179

website: [www.indofinechemical.com](http://www.indofinechemical.com)

e-mail: [chemical@indofinechemical.com](mailto:chemical@indofinechemical.com)

## HPLC ANALYSIS

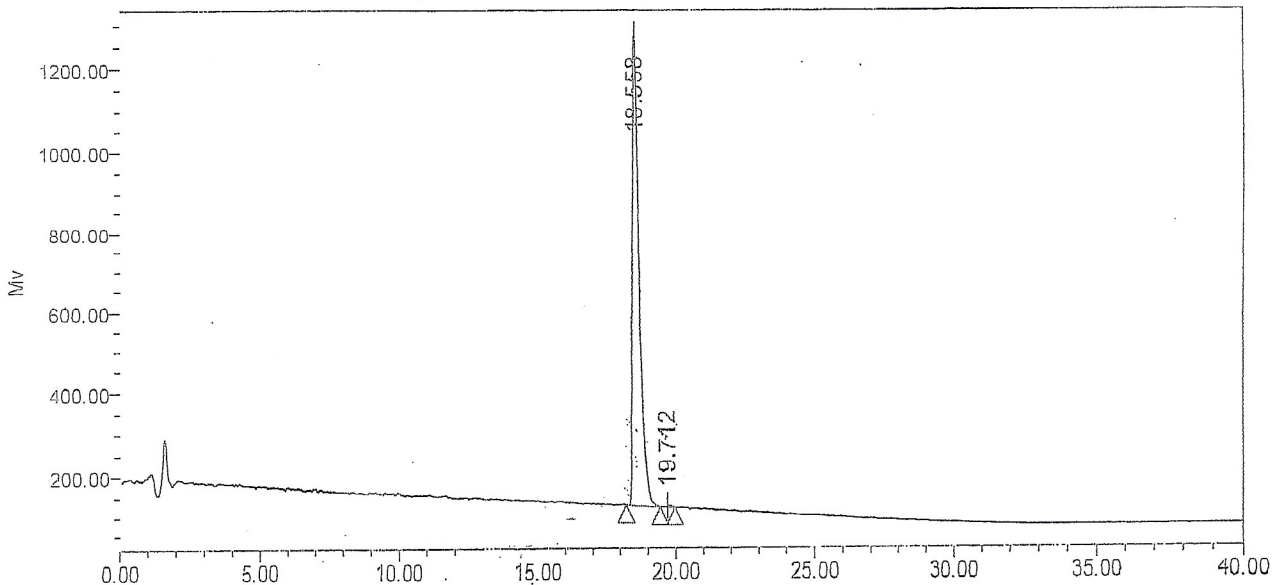


Catalog No.: 06-2192  
Product Name: Carpine  
Lot No.: 2401900

### SAMPLE INFORMATION

Sample Name:	Carpaine	Acquired By:	
Sample Type:		Sample Set Name:	
Vial:	21	Acq. Method Set:	Carpaine
Injection #:	1	Processing Method:	sample
Injection Volume:	10.00 ul	Channel Name:	SATIN
Run Time:	40.0 Minutes	Proc. Chnl. Descr.:	

Auto-Scaled Chromatogram



Peak Results

Name	RT	Area	% Area	USP Plate Count	USP Resolution
1	18.558	19036701	99.48	30591.70	
2	19.712	99053	0.52	22567.11	2.87

Prepared by:

*Ramesh Mandadi*

Ramesh Mandadi  
Director of Operations

Reviewed and Approved by:

*Sujata Moton*

Sujata Moton  
VP